

Early Childhood Outcomes Report, Program Year 2005-2006



**Project coordinated by
The Northeast Regional Education Cooperative (#4)
and The Southwest Regional Education Cooperative (#10)**

**Data Submitted to:
The New Mexico Public Education Department,
Special Education Bureau**

**Report Submitted by:
The Northeast Regional Education Cooperative #4,
P.O. Box 927
Las Vegas, NM, 87701**



Date: May 19, 2006

I. Executive Summary

The Early Childhood Outcomes Study is a statewide effort of the New Mexico Public Education Department-Special Education Bureau, the Northeast Regional Education Cooperative #4, (NEREC) and the Southwest Regional Education Cooperative #10, (SWREC). This study was conducted as a census of the 4,639 three and four year olds in early childhood programs across the state. Progress was reported on a total of 4,122 of these participant children. This study was in part a pilot project to test a system of data collection for outcomes and performance on provider programs funded by the NMPED. The data was used to evaluate provider assessment data collection as well as child outcomes.

II. Methodology

All early childhood programs in the state were surveyed between April 3 and May 5, 2006. The survey was web-based with multiple-site simultaneous access. Information on the survey was delivered to all provider agencies beginning in March, 2006. Technical assistance on completion of the surveys was available both on a web-site and via direct phone support. Survey data was collected and submitted electronically for compilation and analysis. Each of the school districts was assigned a unique password to assure confidentiality of information. Each district were able to view only their own data.

III. Research Questions

The Early Childhood Outcomes Study used quantitative data to answer the following questions:

1. What is the progress of three and four year old children enrolled in early childhood programs and who are receiving special education services?

All programs were asked to complete information on children enrolled including:

- Use of Appropriate Behaviors to Meet Their Needs
 - Made progress (above baseline)
 - Did not make progress (below baseline)
 - Maintenance (same as baseline)
 - NA (at age level on program entry)
- Acquisition and Use of Knowledge and Skills (including early language communication and early literacy)
 - Made progress (above baseline)
 - Did not make progress (below baseline)
 - Maintenance (same as baseline)
 - NA (at age level on program entry)

- Positive Socio-emotional Skills (including social relationships)
 - Made progress (above baseline)
 - Did not make progress (below baseline)
 - Maintenance (same as baseline)
 - NA (at age level on program entry)

2. What instruments are being used to assess progress in the identified skills areas?

3. What are the barriers that programs may encounter in the process of collecting performance and outcome data at the local level, and what are the possible solutions to these barriers?

In this report all evaluation questions are addressed. It is anticipated that the answers to these questions will form a basis for evaluating and planning early childhood special education services and reporting information to the NMPED on an annual basis.

IV. Research Population

Of the 4,639 children enrolled in early childhood programs in New Mexico, data was reported on 4,122, (a return rate of 89%). Selection bias was determined to be not statistically significant when comparing data reported and un-reported data. There are a total of 89 school districts plus School for the Deaf and the School for the Blind and Visually Handicapped in the state. A total of 77 of the districts reported data included in this report. Seven districts had no children in programs, two did not report, and five reported too late to be included in the analysis.

V. Descriptive Statistics

Total Research Population:

N= 4,122

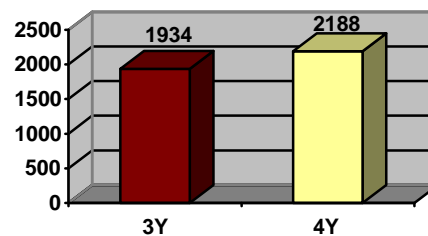
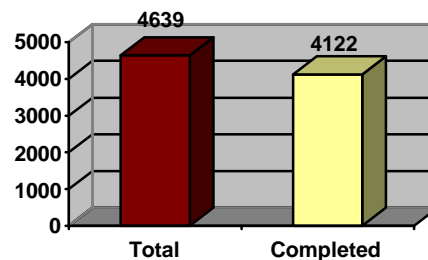
Survey Return Rate:

$4,122 / 4,639 = 89\%$

Age

3 Year Olds = 1,934

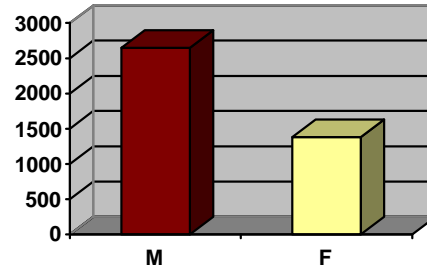
4 Year Olds = 2,188



Gender

M= 2,646

F= 1,380



Race/Ethnicity

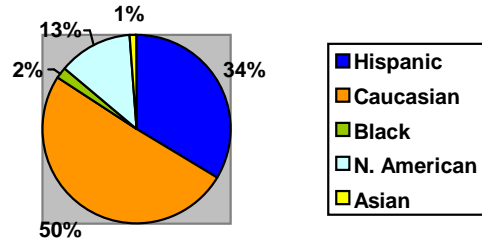
Caucasian- 1329/ 34%

Hispanic- 2367/ 50%

Black- 93/ 2%

Native American- 502/ 13%

Asian- 32/1%



Exceptionality

DD (Developmental Disability) - 2587/ 64%

SLD (Speech Language Deficiency) - 19/ 30%

AU (Autism) - 55/ 1%

MD (Multi-Disabled) - 47/ 1%

OHI (Other Hearing Impairment) - 44/ 1%

HI (Hearing Impaired) - 30/ 1%

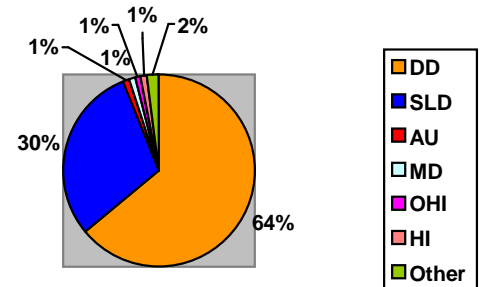
MR (Mentally Retarded) - 11/ 0%

TBI (Traumatic Brain Injury) - 10/ 0%

ED (Emotionally Disturbed) - 2/ 0%

VI (Visually Impaired) - 1/ 0%

DB (Deaf/ Blind) - 1/ 0%



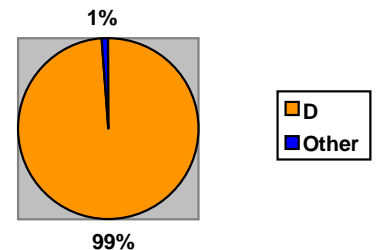
Service Level (amount of special education services provided)

A (less than 10% of day) - 8/ 0%

B (11-49% of day) - 5/ 0%

C (50% or more of day but less than full day) - 1/ 0%

D (up to full day) - 4012/ 99%



Setting (location where learning takes place)

1 - 1309/ 33%

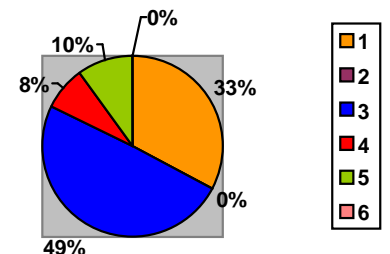
2 - 8/ 0%

3 - 1993/ 50%

4 - 319/ 8%

5 - 401/ 10%

6 - 4/ 0%



¹ Note: On Setting, two of the categories in the data are invalid, (2 and 6). Service Level data included, A, B, C and D, although the ADS manual specifies nine numerical categories.

Returned Surveys by District

	<i>Population (ADS, Dec.1)</i>	<i>Returned</i>	<i>Submitted after Deadline</i>
Alamogordo	143	130	
Albuquerque	815	666	
Animas	5	4	
Artesia	70	2	
Aztec	47	46	
Belen	67	62	
Bernalillo	47	44	
Bloomfield	84	79	
Capitan	9	9	
Carlsbad	109	95	
Carrizozo	1	0	5
Central	166	150	
Chama	7	7	
Cimarron	10	10	
Clayton	16	16	
Cloudcroft	7	9	
Clovis	146	128	
Cobre	25	28	
Corona	1	1	
Cuba	11	11	
Deming	70	66	
Des Moines	0	0	
Dexter	15	22	
Dora	15	13	
Duce	9	6	
Elida	8	6	
Espanola	57	45	
Estancia	6	0	7
Eunice	16	16	
Farmington	156	159	
Floyd	6	6	
Ft Sumner	12	11	
Gadsden	211	203	
Gallup	186	170	
Grady	7	0	6
Grants	58	0	
Hagerman	4	3	
Hatch	13	13	

Returned Surveys by District

	<i>Population (ADS, Dec.1)</i>	<i>Returned</i>	<i>Submitted after Deadline</i>
Hobbs	108	115	
Hondo	1	0	
House	1	1	
Jal	32	32	
Jemez Mountain	0	0	
Jemez Valley	6	9	
Lake Arthur	4	4	
Las Cruces	264	236	
Las Vegas City	10	9	
Logan	16	16	
Lordsburg	28	24	
Los Alamos	59	59	
Los Lunas	162	140	7
Loving	9	9	
Lovington	188	186	
Magdalena	17	0	18
Maxwell	3	2	
Melrose	25	24	
Mesa Vista	0	0	
Mora	11	10	
Moriarty	45	40	
Mosquero	0	0	
Mountainair	2	2	
Pecos	29	27	
Penasco	12	11	
Pojoaque	18	18	
Portales	71	63	
Quemado	0	0	
Questa	2	2	
Raton	43	39	
Reserve	4	4	
Rio Rancho	160	160	
Roswell	227	214	
Roy	0	0	
Ruidoso	24	25	
San Jon	2	2	
Santa Fe	106	106	
Santa Rosa	11	11	
School/ Deaf	3	0	6
Silver city	34	25	
Socorro	36	35	

Returned Surveys by District

	<i>Population (ADS, Dec.1)</i>	<i>Returned</i>	<i>Submitted after Deadline</i>
Springer	6	6	
T or C	55	53	
Taos	52	53	
Tatum	3	3	
Texico	16	16	
Tucumcari	44	47	
Tularosa	10	10	
Vaughn	2	2	
Visually Handicap	1	0	
Wagon Mound	0	0	
West Las Vegas	16	16	
<u>Zuni</u>	<u>19</u>	<u>19</u>	
Totals	4639	4122	49

VI. Analysis of Responses

1. What is the progress of three and four year old children enrolled in early childhood programs and who are receiving special education services?

In the three functional areas measured, three and four year olds were reported having made progress at a high rate. In the area of **Use of Appropriate Behaviors to Meet Their Needs**, 72% were reported as having made progress. **In the area of Acquisition and Use of Knowledge and Skills (including early language communication and early literacy)**, 85% were reported as having made progress. In the area of **Positive Socio-Emotional Skills**, 76% were reported as having made progress. For three year olds only, the rates for “made progress” in these three areas were 71%, 84% and 75%. (see charts and tables in appendix).

2. What instruments are being used to assess progress in the identified skills areas?

A total of 37 assessment instruments were reported by providers. This does not include responses that indicated that no instrument was used in assessing the progress of students, (responses including teacher observation, professional judgment, etc.). A total of 71% reported that they used a version of the Brigance. Other instruments reported included Creative Curriculum, Focused Portfolio, First Steps, Dial 3 and Goldman-Fristoe Test of Articulation, (GFTA). A complete list of instruments used in charts and tables is in the appendix.

3. *What are the barriers that programs may encounter in the process of collecting performance and outcome data at the local level, and what are the possible solutions to these barriers?*

Programs that do not use comprehensive assessment tools were not able to report progress data that could be considered as valid and reliable. A total of 603 entries were in this category. Several schools stated that the reporting occurred at the time of year when they had the least time to devote to it, (April-May). It is imperative that programs assess students early in the year so that a baseline to measure progress is established for the end of year outcomes report. The next section presents recommendations to address these issues.

VII. Recommendations

1. To insure consistency, and to insure validity and reliability of reported data, a limited number of NMPED designated assessment instruments, (no more than 10), must be identified that assess all three progress areas to be reported to OSEP. Recommendations of the ECO Stakeholder Task Force should be considered in the identification of acceptable assessment instruments. The ECO Stakeholder Group is also recommending the implementation of a 7-point progress reporting scale that the National Early Childhood Technical Assistance Center, (NECTAC) is promoting nationally. This reporting scale could crosswalk with the survey used in this year's Early Childhood Outcomes Survey. To assist in creating consistent mechanisms of program evaluation, it would be beneficial to coordinate with other programs, such as Reading First, and Pre K. This would also avoid over-testing of students.
2. The NMPED should notify districts early in the fall of 2006 about recommended assessment instruments, so that the same instrument is used for the Pre Test and Post Test. Early notification and direction will assure that progress data is available by year end.
3. It would be beneficial to school districts to have access to their district data upon request. If possible, the PED could email each district the page of state summary data, with REC #4 contact information. NEREC could then email individual reports as requested. The availability of local data would serve to market the early childhood outcomes process to providers and promote the value of their efforts.
4. Although there is probably little flexibility in reporting requirements, districts have requested that the annual survey not be conducted during the last two months of school. If it were possible to conduct the annual survey in March, the post-test information data could be utilized for PLEP information at annual IEP review meetings, transition IEP development and for end of year reporting of student progress. In addition to OSEP reporting, these uses for collected data would be a strong incentive to programs to develop a strong assessment process and to maintain and report data consistently.

5. A strong infrastructure must be established whereby data collection and reporting can be closely monitored throughout the process to identify errors in data entry and non-responders at a point when interventions are possible. NEREC and SWREC provided extensive technical assistance and information to responders from programs around the state during the survey process. The availability of trained staff to monitor the data submission process and communicate with programs to make adjustments as needed is critical to the success of the effort.
6. The database should be evaluated and “tweaked” to improve data entry processes and quality of data.
7. NEREC will forward an addendum to these recommendations once the participant satisfaction survey is completed, entered into a database, and analyzed.

VII. Appendix

Charts

1. Assessment Instruments Identified, (sorted by number of reported users)
2. Most Commonly Reported Assessment Instruments
3. Assessment Instruments by District and School
4. Early Childhood Outcomes for 3Y (spreadsheet)
5. Early Childhood Outcomes for 3Y (chart)
6. Early Childhood Outcomes for 3Y & 4Y (spreadsheet)
7. Early Childhood Outcomes for 3Y & 4Y (chart)

Assessment Instruments Identified

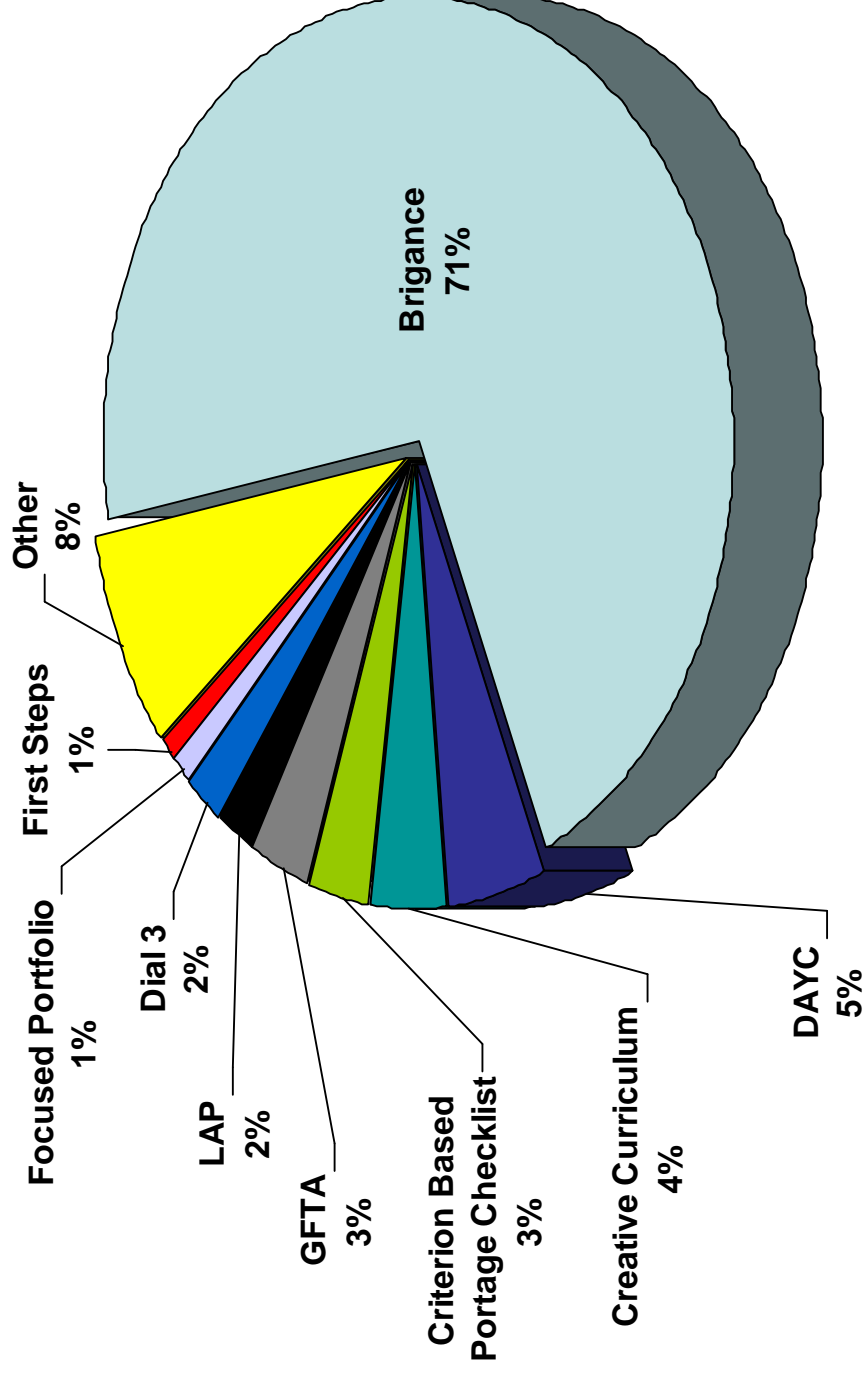
Brigance	2378
DAYC	168
Creative Curriculum Assessment	130
Criterion Based Portage Checklist	111
Goldman Fristoe Test of Articulation (GFTA)	102
Learning Accomplishment Profile (LAP, LAP3, LAP-D)	78
Dial 3	72
Focused Portfolio	33
First Steps	32
Midwest NM CAP Assessment	19
TMA	18
Sopris West	16
Handwriting Without Tears Readiness Sample	15
Boehm 3 Pre-school	14
CELF	13
Pre-school Language Scale (PLS-4)	12
Clinical Assessment of Articulation and Phonology (CAAP)	12
Westley	10
Success for All (SFA)	10
Needs (CCPSN)	9
Houghton- Mifflin Observation Checklist	8
Headstart Work Sampling Development Checklist	8
Peabody Developmental Motor Scale (PDMS)	8
Spanish Articulation Measures	8
Developmental Outcomes Profile	6
Kaufman Bracken Beery Buktenica	5
Miller Assessment for Pre-Schoolers	5
SELF Pre School Denver II	5
APP-R	4
Prelas 2000	4
High Reach Learning Curriculum	4
Arizona Articulation Scale	4
BASC	2
Structured Photographic Articulation Scale	2
Callier-Azusa	2
Comprehensive Individual Assessment Summary	2
Fluerg Sample	1
TOTAL	3330

No Recognizable Instrument

Teacher, Teacher Observation, Teacher made assessment	195
Portfolio	169
Data Collection	105
Observation	81
Professional Judgment	27
Checklist	15
Assessment	11

Informal pre-school assessment	10
Report card	7
Benchmarks	7
Past data	4
Home schooled	2
IEP goals	1
Anecdotal records	1
No answer or illegible	157
TOTAL	792
TOTAL ASSESSMENT INSTRUMENT RESPONSES	4122

Most Commonly Reported Assessment Instruments



ECO Assessment Instruments by District and School

Count of Instrument		School	Other Instrument	Instrument	Total	
Alamogordo	Alamogordo high		Brigance	Brigance	31	
			Total		31	
			no informal test, did observation	Brigance	1	
			no informal test, did observation Total		1	
			Observation	Other	2	
			Observation Total		2	
			Alamogordo high Total		34	
			Holloman primary	Brigance	19	
			Total		19	
			Attempted Brigance and supplemented with Observation.	Brigance	1	
	Attempted Brigance and supplemented with Observation. Total		1			
	professional judgement	Other	1			
	professional judgement Total		1			
	Holloman primary Total		21			
	North elem	Brigance	50			
	Total		50			
	North elem Total		50			
	Yucca elem	Brigance	25			
	Total		25			
	Yucca elem Total		25			
Alamogordo Total					130	
Albuquerque		Goldman Fristoe	Other	1		
		Goldman Fristoe Total		1		
Albuquerque		Total		1		
		Albuquerque Total				1
		Total	Brigance	41		
		Artic Proaf	Other	1		
		Artic Proaf Total		1		
		CAAP	Other	2		
		CAAP Total		2		
		Data Collection	Other	48		
		Data Collection Total		48		

ECO Assessment Instruments by District and School

Albuquerque	Total	Other	1
Focus Portfolio		Other	1
Focus Portfolio Total			1
Focus Portfolio		Other	11
Focus Portfolio Total			11
Goldman Fristoe Test of Articulation-2		Other	1
Goldman Fristoe Test of Articulation-2 Total			1
Goldman Fristoe		Other	7
Goldman Fristoe Total			7
Khan lewis Artic Srole		Other	1
Khan lewis Artic Srole Total			1
Khan Probe Long Sgruples		Other	1
Khan Probe Long Sgruples Total			1
Lang Sample		Other	1
Lang Sample Total			1
LAP-3		Other	11
LAP-3 Total			11
National Reportary		Other	1
National Reportary Total			1
NRS (National Report System		Other	1
NRS (National Report System Total			1
PLS-4		Other	11
PLS-4 Total			11
Post data		Other	5
Post data Total			5
Spanish Artic		Other	6
Spanish Artic Total			6
Spanish Articulation		Other	1
Spanish Articulation Total			1
SPAT-D2		Other	2
SPAT-D2 Total			2
Structured Photographic Articulation Test-2		Other	2
Structured Photographic Articulation Test-2 Total			2
Tructured Photographic Articulation Test-2		Other	1
Tructured Photographic Articulation Test-2 Total			1
westby		Other	10
westby Total			10
Total			166

ECO Assessment Instruments by District and School

Albuquerque	A montoya elem	Brigance	7	
	Total		7	
		Data Collection	Other	1
		Data Collection Total		1
	A montoya elem Total			8
	Apache elementary	Brigance	14	
	Total		14	
	Apache elementary Total			14
	Arroyo del oso elem	Brigance	15	
	Total		15	
		SLP Log Progress Measure	Other	2
		SLP Log Progress Measure Total		2
		Slp Log Progress Measure	Other	5
		Slp Log Progress Measure Total		5
		SLP Log Progress Measures	Other	6
		SLP Log Progress Measures Total		6
	Arroyo del oso elem Total			28
	Atrisco elementary	Brigance	9	
	Total		9	
	Atrisco elementary Total			9
	Bel-air elementary	Brigance	10	
	Total		10	
	Bel-air elementary Total			10
Carlos rey elem	Brigance	14		
Total		14		
Carlos rey elem Total			14	
Chaparral elementary	Brigance	12		
Total		12		
	Data Collection	Other	1	
	Data Collection Total		1	
Chaparral elementary Total			13	
Chelwood elem	Other	1		
d Total		1		
Data Collection	Other	26		
Data Collection Total		26		
Chelwood elem Total			27	
Collet park elem	Brigance	14		

ECO Assessment Instruments by District and School

Albuquerque	Collet park elem	Total		14
		Goldman Fristoe Test of Articulation	Other	6
		Goldman Fristoe Test of Articulation Total		6
		Goldman Fristoe Test of Artuculation	Other	1
		Goldman Fristoe Test of Artuculation Total		1
		Goldman Fristoe Test of Atriculation	Other	1
		Goldman Fristoe Test of Atriculation Total		1
		Goldmand Fristoe Test of Articulation	Other	3
		Goldmand Fristoe Test of Articulation Total		3
	Collet park elem Total			25
	Dennis chavez elemen	Total	Brigance	14
				14
	Dennis chavez elemen Total			14
	Hawthorne elem	Total	Brigance	14
				14
	Hawthorne elem Total			14
	Hodgin elem	Total	Brigance	13
				13
	Hodgin elem Total			13
	Hub h humphrey eleme	Total	Brigance	7
				7
	Goldman Fristoe	Other		9
	Goldman Fristoe Total			9
	Goldmand Fristoe	Other		1
	Goldmand Fristoe Total			1
	Hodson	Other		2
	Hodson Total			2
	Hub h humphrey eleme Total			19
	Inez elementary	Total	Brigance	12
				12
	Data Collection	Other		14
	Data Collection Total			14
	Inez elementary Total			26
	Kit carson elementar	Total	Brigance	16
				16
	Kit carson elementar Total			16
	Lavaland elementary		Brigance	24

ECO Assessment Instruments by District and School

Albuquerque	Lavaland elementary	Total	24
	Lavaland elementary Total		24
	Los ranchos elem	Brigance	11
		Total	11
	Los ranchos elem Total		11
	Lowell elem	Brigance	16
		Total	16
	Lowell elem Total		16
	Macarthur elem	Brigance	26
		Total	26
		CAAP	8
		CAAP Total	8
	Macarthur elem Total		34
	Mark twain elem	Brigance	9
		Total	9
		Data Collection	2
		Data Collection Total	2
	Mark twain elem Total		11
	Mc collum elem	Brigance	5
		Total	5
	Mc collum elem Total		5
	Mission avenue elem	Brigance	10
		Total	10
	Mission avenue elem Total		10
	Montezuma elem	Brigance	3
		Total	3
	Montezuma elem Total		3
	Onate elementary	Brigance	8
		Total	8
		Goldman Fristoe	1
		Goldman Fristoe Total	1
	Onate elementary Total		9
	Petroglyph elem	Brigance	34
		Total	34
	Data Collection	12	
	Data Collection Total	12	
	Fluerg Sample	1	

ECO Assessment Instruments by District and School

Albuquerque	Petroglyph elem	Fluerg Sample Total	1
		Goldman Fristoe	Other
		Goldman Fristoe Total	37
		Goldmand Fristoe	Other
		Goldmand Fristoe Total	1
		Observation	Other
		Observation Total	1
		Speech Sample	Other
		Speech Sample Total	5
			5
	Petroglyph elem Total		91
	Sombra del monte ele	Brigance	8
		Total	8
	Sombra del monte ele Total		8
	Valle vista elem	Brigance	16
		Total	16
	Valle vista elem Total		16
	Zia elementary	Brigance	11
		Total	11
	Zia elementary Total		11
			11
Albuquerque Total			665
Animas	Animas elem	Modified Brigance and professional assessment	Other
		Modified Brigance and professional assessment Total	4
			4
	Animas elem Total		4
			4
Animas Total			4
Artesia	Grand hts.early chd.	Brigance	2
		Total	2
	Grand hts.early chd. Total		2
			2
Artesia Total			2
Aztec	Mc coy avenue elem	professional judgement	Other
		professional judgement Total	11
		Professional judgment	Other
		Professional judgment Total	5
		professional judgement	Other
		professional judgement Total	1
		professional judgement	Other
		professional judgement Total	1
			1
	Mc coy avenue elem Total		18

ECO Assessment Instruments by District and School

Aztec	Rippey elem	DAYC	Other	19	
		DAYC Total		19	
	Rippey elem Total			19	
	Tiger learning cnt.	professional judgement	Other	9	
		professional judgement Total		9	
	Tiger learning cnt. Total			9	
Aztec Total				46	
Belen	Dennis chavez elem	Total	Brigance	16	
		Total		16	
	Dennis chavez elem Total			16	
	Gil sanchez elem	Boehm 3 - Preschool		Other	1
		Boehm 3 - Preschool Total			1
		Boehm 3 Preschool		Other	6
		Boehm 3 Preschool Total			6
		Boehm-3 Preschool		Other	1
		Boehm-3 Preschool Total			1
		Boehms-3 Preschool		Other	1
		Boehms-3 Preschool Total			1
	Gil sanchez elem Total				9
	Jaramillo elem	Total	Brigance	17	
	Total			17	
Jaramillo elem Total				17	
La promesa elem	Boehm 3 Preschool		Other	6	
	Boehm 3 Preschool Total			6	
La promesa elem Total				6	
Rio grande elem			Brigance	14	
		Total		14	
Rio grande elem Total				14	
Belen Total				62	
Bernalillo		Comparison of PLP/SLP observation	Other	1	
		Comparison of PLP/SLP observation Total		1	
		Comparison of PLP/teacher observation	Other	3	
		Comparison of PLP/teacher observation Total		3	
		Comparison of PLPs, teacher/therapist observation	Other	11	
		Comparison of PLPs, teacher/therapist observation Total		11	
		Comparison of PLPs, teacher/therapist observation	Other	1	
		Comparison of PLPs, teacher/therapist observation Total		1	

ECO Assessment Instruments by District and School

Bernalillo	Rio grande elem Total	Comparison of PLPs, teacher/therapist observations	Other	1	
	Total	Comparison of PLPs, teacher/therapist observations Total		1	
	Algodones elem		Comparison of PLP	Other	17
			Comparison of PLP Total		1
			Comparison of PLP/teacher observation	Other	1
			Comparison of PLP/teacher observation Total		1
	Algodones elem Total				2
			Comparison of PLP/teacher observation	Other	3
	Cochiti elem		Comparison of PLP/teacher observation Total		3
					3
	Cochiti elem Total				3
			Comparison of PLP/SLP observation	Other	2
	Placitas elem		Comparison of PLP/SLP observation Total		2
					2
	Placitas elem Total		Comparison of PLP/teacher observation	Other	10
			Comparison of PLP/teacher observation Total		10
			Comparison of PLPs, teacher/therapist observation	Other	8
		Comparison of PLPs, teacher/therapist observation Total		8	
Roosevelt primary		Comparison of PLPs, teacher/therapist observations	Other	2	
		Comparison of PLPs, teacher/therapist observations Total		2	
Roosevelt primary Total			20		
Bernalillo Total				44	
Bloomfield	Blanco elem		Brigance	10	
		Total		10	
	Blanco elem Total			10	
	Bloomfield family lc		Brigance	69	
Total			69		
Bloomfield family lc Total			69		
Bloomfield Total				79	
Capitan	Capitan elem	Checklist of State Standards/observation	Other	7	
		Checklist of State Standards/observation Total		7	
	Godman Fristoe/observation	Other	1		
	Godman Fristoe/observation Total		1		
	Goldman Fristoe/observation	Other	1		
Goldman Fristoe/observation Total		1			
Capitan elem Total			9		
Capitan Total				9	

ECO Assessment Instruments by District and School

Carlsbad	Dr. e.m. smith elem	Creative Curriculum	Other	2
		Creative Curriculum Total		2
Ece center	Dr. e.m. smith elem Total			2
		Total	Brigance	73
		Creative Curriculum	Other	20
		Creative Curriculum Total		20
Ece center Total				93
Carlsbad Total				95
Central		DAYC	Other	44
		DAYC Total		44
	Total			44
	Nataani nez elem	DAYC	Other	36
		DAYC Total		36
	Nataani nez elem Total			36
	Newcomb elem	DAYC	Other	10
		DAYC Total		10
	Newcomb elem Total			10
	Nizhoni elem	DAYC	Other	19
		DAYC Total		19
	Nizhoni elem Total			19
	Ojo amarillo elem	DAYC	Other	33
		DAYC Total		33
Ojo amarillo elem Total			33	
Ruth n bond elem	DAYC	Other	7	
	DAYC Total		7	
Ruth n bond elem Total			7	
Tse'bit'ai mid	DAYC	Other	1	
	DAYC Total		1	
Tse'bit'ai mid Total			1	
Central Total				150
Chama	Chama elem	Goldman Fristoe Test of Articulation 2	Other	1
		Goldman Fristoe Test of Articulation 2 Total		1
		Miller Assessment for Preschoolers	Other	5
		Miller Assessment for Preschoolers Total		5
		Physical Therapy Clinical Observation	Other	1
	Physical Therapy Clinical Observation Total		1	

ECO Assessment Instruments by District and School

Chama	Chama elem Total		7	
Chama Total			7	
Cimarron	Cimarron elem	Standard and Benchmarks for Ages 3 and 4	Other	
		Standard and Benchmarks for Ages 3 and 4 Total		
		Standards and Benchmarks for Ages 3 and 4	Other	
		Standards and Benchmarks for Ages 3 and 4 Total		
	Cimarron elem Total		2	
Eagle nest elem	Eagle nest elem	New Mexico State Performance Standards & Benchmarks	Other	
		New Mexico State Performance Standards & Benchmarks Total		
		New Mexico State Performance Standards and Benchmarks	Other	
		New Mexico State Performance Standards and Benchmarks Total		
Eagle nest elem Total		8		
Cimarron Total			10	
Clayton	Alvis elem	Handwriting without Skills Readiness Skills	Other	
		Handwriting without Skills Readiness Skills Total		
		Handwriting without Tears Readiness Skills	Other	
		Handwriting without Tears Readiness Skills Total		
		Handwriting without Tears Readiness	Other	
		Handwriting without Tears Readiness Total		
		Alvis elem Total		15
		Amistad charter	Other	1
Amistad charter Total		1		
Clayton Total			16	
Cloudcroft	Cloudcroft elem	Learning Accomplishment Profile (LAP)	Other	
		Learning Accomplishment Profile (LAP) Total		
		Learning Accomplishment Profile (LAPS)	Other	
		Learning Accomplishment Profile (LAPS) Total		
		Learning Accomplishment Profile	Other	
Learning Accomplishment Profile Total		3		
Cloudcroft elem Total		9		
Cloudcroft Total			9	
Clovis	Los ninos ecc	Total	Brigance	
		speech therapy progress notes, attendance records		
		speech therapy progress notes, attendance records Total		
Los ninos ecc Total		128		

ECO Assessment Instruments by District and School

Clovis Total									128	
Cobre	Bayard elem	Learning Accomplishment Profile		Other					17	
		Learning Accomplishment Profile Total							17	
	Bayard elem Total								17	
Central elem	Total	Brigance							11	
		Total							11	
Central elem Total									11	
Cobre Total									28	
Corona	Corona elem	Classroom observation, teacher/parent report		Other					1	
		Classroom observation, teacher/parent report Total							1	
Corona elem Total									1	
Corona Total									1	
Cuba	Cuba elem	Brigance							11	
		Total							11	
Cuba elem Total									11	
Cuba Total									11	
Deming	Columbus elem	Brigance							6	
		Total							6	
Columbus elem Total									6	
My little school	Total	Brigance							60	
		Total							60	
My little school Total									60	
Deming Total									66	
Dexter	Dexter elem	Brigance Screening/Report Cards		Brigance					22	
		Brigance Screening/Report Cards Total							22	
Dexter elem Total									22	
Dexter Total									22	
Dora	Dora elem	First Step; Developmental Checklist; Portfolio		Other					1	
		First Step; Developmental Checklist; Portfolio Total							1	
		FirstStep; SLP Pre and post test; Portfolio; Developmental Checklist		Other						2
		FirstStep; SLP Pre and post test; Portfolio; Developmental Checklist Total								2
		FirstStep; SLP Pre and post tests; Portfolio; Developmental Checklist		Other						1
		FirstStep; SLP Pre and post tests; Portfolio; Developmental Checklist Total								1
		FirstStep; SLP Pre- and post-test; Portfolio; Developmental Checklist		Other						1
		FirstStep; SLP Pre- and post-test; Portfolio; Developmental Checklist Total								1
Dora	Total	FirstStep; SLP Probes; Portfolio; Developmental Checklist		Other					5	
		FirstStep; SLP Probes; Portfolio; Developmental Checklist Total							5	

ECO Assessment Instruments by District and School

Dora	Dora elem	SLP Pre and Post test; SLP Probes	Other	2
		SLP Pre and Post test; SLP Probes Total		2
		SLP Pre- and post-test; Portfolio; Developmental Checklist	Other	1
		SLP Pre- and post-test; Portfolio; Developmental Checklist Total		1
	Dora elem Total			13
Dora Total				13
Dulce		DIAL-3	Other	1
		DIAL-3 Total		1
	Total			1
	Dulce elem	DIAL-3	Other	5
		DIAL-3 Total		5
	Dulce elem Total			5
Dulce Total				6
Elida	Elida elem	First Step	Other	6
		First Step Total		6
	Elida elem Total			6
Elida Total				6
Espanola		Creative Curriculum Assessment	Other	5
		Creative Curriculum Assessment Total		5
		Focused Profile	Other	2
		Focused Profile Total		2
	Total			7
	Abiquiu elem	Total	Brigance	1
		Creative Curriculum Assessment	Other	1
		Creative Curriculum Assessment Total		2
		Focused Profile	Other	1
		Focused Profile Total		1
	Abiquiu elem Total			4
	Homebound/hospital	Total	Brigance	1
				1
	Homebound/hospital Total			1
	Los ninos center	Total	Brigance	32
				32
		Classroom observations	Other	1
		Classroom observations Total		1
	Los ninos center Total			33

ECO Assessment Instruments by District and School

Espanola Total			45
Eunice	Mettie jordan elem	Sopris West	Other
	Sopris West Total		16
Mettie jordan elem Total			16
Eunice Total			16
Farmington	Animas elem		Brigance
	Total		1
	Animas elem Total		1
	Apache elem		Brigance
	Total		24
	Apache elem Total		24
	Esperanza elem		Brigance
	Total		63
	Esperanza elem Total		63
	Farmington preschool		Brigance
Total		71	
Farmington preschool Total			71
Farmington Total			159
Floyd	Floyd elem		Brigance
	Total		6
Floyd elem Total			6
Floyd Total			6
Fort Sumner	Fort sumner elem	1st Step and classroom assessment	Other
	1st Step and classroom assessment Total		1
	1st Step and classroom assessments		Other
	1st Step and classroom assessments Total		10
Fort sumner elem Total			10
Fort sumner elem Total			11
Fort Sumner Total			11
Gadsden	Sunrise elem		Brigance
	Total		1
Sunrise elem Total			1
Gadsden Total			1
Gadsden			Brigance
	Total		10
	Total		10
	Alma de valle		Brigance
Total			1

ECO Assessment Instruments by District and School

Gadsden	Alma de valle Total		1	
	Anthony elem	Brigance	26	
		Total		26
		Comprehensive Individual Assessment Summary	Other	2
		Comprehensive Individual Assessment Summary Total		2
		SLP daily progress notes	Other	1
		SLP daily progress notes Total		1
		Anthony elem Total		29
		Berino elementary	Brigance	16
			Total	16
		Berino elementary Total		16
		Chaparral elem	Brigance	39
			Total	39
		Chaparral elem Total		39
		La union elem	Brigance	9
			Total	9
		La union elem Total		9
		Mesquite elem	Brigance	10
			Total	10
		Mesquite elem Total		10
		Riverside elem	Brigance	26
			Total	26
		Riverside elem Total		26
		San miguel elem	Brigance	7
			Total	7
		San miguel elem Total		7
	Santa teresa elem	Brigance	8	
		Total	8	
	Functional Behavioral Assessment	Other	1	
	Functional Behavioral Assessment Total		1	
	PEP-R	Other	1	
	PEP-R Total		1	
	Santa teresa elem Total		10	
	Santa teresa high	Brigance	1	
		Total	1	
	Santa teresa high Total		1	
	Sunland park elem	Brigance	18	

ECO Assessment Instruments by District and School

Gadsden	Sunland park elem	Total		18	
	Sunland park elem Total			18	
	Sunrise elem		Brigance	6	
		Total		6	
		Observation	Brigance	8	
		Observation Total		8	
	Sunrise elem Total	Observations	Brigance	4	
		Observations Total		4	
					18
					8
Vado elem	Total	Brigance	8		
	teacher observations	Other	1		
	teacher observations Total		1		
Vado elem Total			9		
Gadsden Total				203	
Gallup		Portfolio	Other	73	
			Portfolio Total	73	
	Total			73	
	Chee dodge elem		Portfolio	Other	1
				Portfolio Total	1
			Portfolio	Other	6
				Portfolio Total	6
	Chee dodge elem Total			7	
	Church rock elem	Portfolio	Other	7	
				Portfolio Total	7
	Church rock elem Total			7	
	Crownpoint elem	Portfolio	Other	1	
				Portfolio Total	1
		Portfolio	Other	2	
				Portfolio Total	2
	Crownpoint elem Total			3	
	David skeet elem	Portfolio	Other	4	
				Portfolio Total	4
	David skeet elem Total			4	
	Indian hills elem	Portfolio	Other	3	
		Portfolio Total	3		
Portfolio		Other	8		

ECO Assessment Instruments by District and School

Gallup	Indian hills elem	Portfolio Total	8
	Indian hills elem Total		11
	Jefferson elem	Portfolio Other	1
		Portfolio Total	1
		Portfolio	4
		Portfolio Total	4
	Jefferson elem Total		5
	Juan de onate	Portfolio Other	1
		Portfolio Total	1
		Portfolio	6
		Portfolio Total	6
	Juan de onate Total		7
	Lincoln elem	Portfolio Other	1
		Portfolio Total	1
		Portfolio	12
		Portfolio Total	12
	Lincoln elem Total		13
	Navajo elem	Portfolio Other	4
		Portfolio Total	4
	Navajo elem Total		4
	Ramah elem	Portfolio Other	2
		Portfolio Total	2
	Ramah elem Total		2
	Red rock elem	Portfolio Other	6
		Portfolio Total	6
	Red rock elem Total		6
	Rocky view elem	Portfolio Other	9
		Portfolio Total	9
	Rocky view elem Total		9
	Roosevelt elem	Portfolio Other	1
		Portfolio Total	1
		Portfolio	5
		Portfolio Total	5
	Roosevelt elem Total		6
	Stagecoach elem	Portfolio Other	1
		Portfolio Total	1
	Stagecoach elem Total		1

ECO Assessment Instruments by District and School

Gallup	Thoreau elem	Portfolio	Other	1
		Portfolio Total		1
		Portfolio	Other	2
		Portfolio Total		2
	Thoreau elem Total			3
	Tohatchi elem	Portfolio	Other	3
		Portfolio Total		3
	Tohatchi elem Total			3
	Turben elemetary	Portfolio	Other	3
		Portfolio Total		3
	Turben elemetary Total			3
	Twin lakes elem	Portfolio	Other	2
		Portfolio Total		2
	Twin lakes elem Total			2
Washington elem	Portfolio	Other	1	
	Portfolio Total		1	
Washington elem Total			1	
Gallup Total			170	
Hagerman	Hagerman elem	High Reach Learning Curriculum	Other	3
		High Reach Learning Curriculum Total		3
Hagerman Total			3	
Hatch	Hatch valley elem		Brigance	13
		Total		13
	Hatch valley elem Total			13
Hatch Total			13	
Hobbs		Criterion Based and Portage Checklist	Other	7
		Criterion Based and Portage Checklist Total		7
		Criterion Based Portage Checklist	Other	30
		Criterion Based Portage Checklist Total		30
	Total			37
	Alternative high	Criterion Based Portage Checklist	Other	1
		Criterion Based Portage Checklist Total		1
Alternative high Total			1	
Jenkins-nunan center	C		Other	3
	C Total			3
	Criterion Based and Portage Checklist		Other	54

ECO Assessment Instruments by District and School

Hobbs	Jenkins-nunan center	Criterion Based and Portage Checklist Total		54
		Criterion Based Portage Checklist	Other	20
		Criterion Based Portage Checklist Total		20
Hobbs Total	Jenkins-nunan center Total			77
House	House elem	First Step	Other	115
		First Step Total		1
House Total	House elem Total			1
Jal	Jal elem	Teacher Observatio/Kindergarten Readiness Test-Scholastic Testing Service, Ind	Other	1
		Teacher Observatio/Kindergarten Readiness Test-Scholastic Testing Service, Inc. Total		1
		teacher observation	Other	18
		teacher observation Total		18
		Teacher Observation/Kindergarten Readines Test-Scholastic Testing Service, Ind	Other	1
		Teacher Observation/Kindergarten Readines Test-Scholastic Testing Service, Inc. Total		1
		Teacher Observation/Kindergarten Readiness Test- Scholastic Testing Service, I	Other	1
		Teacher Observation/Kindergarten Readiness Test- Scholastic Testing Service, Inc. Total		1
		Teacher Observation/Kindergarten Readiness Test-Scholastic Testing Service, Ir	Other	8
		Teacher Observation/Kindergarten Readiness Test-Scholastic Testing Service, Inc. Total		8
		Teacher Observation/Kindergarten Readiness Test-Scholastic Testing Services, I	Other	1
		Teacher Observation/Kindergarten Readiness Test-Scholastic Testing Services, Inc. Total		1
		Teacher Observatoin	Other	1
		Teacher Observatoin Total		1
		Teacher Observatoin/Kindergarten Readiness Test-Scholastic Testing Service, Ir	Other	1
		Teacher Observatoin/Kindergarten Readiness Test-Scholastic Testing Service, Inc. Total		1
Jal Total	Jal elem Total			32
Jemez Valley	Jemez valley elem	Dial 3	Other	32
		Dial 3 Total		1
		Head Start Work Sampling Developmental Checklist	Other	8
		Head Start Work Sampling Developmental Checklist Total		8
Jemez Valley Total	Jemez valley elem Total			9
Lake Arthur	Lake arthur elem	KABC-II, Vineland (Parent & School), PDMS-2, PLS-4, Goldmand-Fristoe 2	Other	9
		KABC-II, Vineland (Parent & School), PDMS-2, PLS-4, Goldmand-Fristoe 2 Total		1
		Preschool Assessment, High Reach Curriculum	Other	1
		Preschool Assessment, High Reach Curriculum Total		1

ECO Assessment Instruments by District and School

Lake Arthur	Lake arthur elem	Preschool Assessment,High Reach Curriculum Assessment	Other	1
		Preschool Assessment,High Reach Curriculum Assessment Total		1
		Vineland (parent and school), Battelle Dev. Inventory (cog), PDMS2, PLS4, Goldr	Other	1
		Vineland (parent and school), Battelle Dev. Inventory (cog), PDMS2, PLS4, Goldman Fristoe2,		1
	Lake arthur elem Total			4
Lake Arthur Total				4
Las Cruces		Checklists, anecdotal notes, and observation	Other	1
		Checklists, anecdotal notes, and observation Total		1
		Checklists, anecdotal notes, observation	Other	4
		Checklists, anecdotal notes, observation Total		4
		Checklists, Anecdotal notes, Observations	Other	1
		Checklists, Anecdotal notes, Observations Total		1
		Creative Curriculum and OT PT tests	Other	1
		Creative Curriculum and OT PT tests Total		1
		Creative Curriculum	Other	3
		Creative Curriculum Total		3
		Prelas2000, Creative Curriculum	Other	4
		Prelas2000, Creative Curriculum Total		4
	Total			14
Alameda elem			Brigance	2
		Total		2
		Creative Curriculum	Brigance	1
			Other	5
		Creative Curriculum Total		6
		report card	Other	1
		report card Total		1
		Teacher Made assessment	Other	1
		Teacher Made assessment Total		1
	Alameda elem Total			10
Booker t. washington		Creative Curriculum	Other	8
		Creative Curriculum Total		8
		Formal Observation	Other	2
		Formal Observation Total		2
	Booker t. washington Total			10
Central elem		Creative Curriculum	Other	1
		Creative Curriculum Total		1
		IEP goals	Other	1

ECO Assessment Instruments by District and School

Las Cruces	Central elem	IEP goals Total		1
		report card	Other	6
		report card Total		6
	Central elem Total			8
	Cesar e. chavez elem	Creative Curriculum	Other	10
		Creative Curriculum Total		10
		Teacher Made assessment	Other	9
		Teacher Made assessment Total		9
	Cesar e. chavez elem Total			19
	Columbia elementary		Brigance	11
		Total		11
		Anecdotal Records and Denver	Other	1
		Anecdotal Records and Denver Total		1
		Creative Curriculum	Other	1
		Creative Curriculum Total		1
		Creative Curriculum	Other	7
		Creative Curriculum Total		7
	Columbia elementary Total			20
	Conlee elem	Creative Curriculum	Other	9
		Creative Curriculum Total		9
	Conlee elem Total			9
	Desert hills elem	Teacher Made assessment	Other	1
		Teacher Made assessment Total		1
		The Preschool Curriculum	Other	4
		The Preschool Curriculum Total		4
	Desert hills elem Total			5
	Dona ana elem	Creative Curriculum	Other	7
		Creative Curriculum Total		7
		GFTA-2, PLS-4, Speech-Language Sample	Other	1
		GFTA-2, PLS-4, Speech-Language Sample Total		1
		Goldman-Fristoe & Speech Sample	Other	1
		Goldman-Fristoe & Speech Sample Total		1
		PLS 4 Spanish; ROWPVT + EOWPVT Spanish; Lang Sample	Other	1
		PLS 4 Spanish; ROWPVT + EOWPVT Spanish; Lang Sample Total		1
		Spanish Artic Measure; Stuttering Severity Instmt; Johnson's Rating Scale; LCPS	Other	1
		Spanish Artic Measure; Stuttering Severity Instmt; Johnson's Rating Scale; LCPS Stuttering Inter		1
		Spanish Articulation Measures, Speech Sample	Other	1

ECO Assessment Instruments by District and School

Las Cruces	Dona ana elem	Spanish Articulation Measures, Speech Sample Total	1
	Dona ana elem Total		12
	Dona ana jdc	Creative Curriculum	1
		Creative Curriculum Total	1
	Dona ana jdc Total		1
	Hermosa hgts elem	Brigance	13
		Total	13
		Formal Observation	2
		Formal Observation Total	2
	Hermosa hgts elem Total		15
	Highland elementary	Teacher made assesemt based on creative curriculum	1
		Teacher made assesemt based on creative curriculum Total	1
		Teacher Made Assessment based on Creative Curriculum	5
		Teacher Made Assessment based on Creative Curriculum Total	5
		Teacher made assessment/based on Creative Curriculum	1
		Teacher made assessment/based on Creative Curriculum Total	1
		Teacher made assessments based on creative curriculum	5
		Teacher made assessments based on creative curriculum Total	5
		Teaher made assessments, based on creative curriculum	1
		Teaher made assessments, based on creative curriculum Total	1
	Highland elementary Total		13
	Jornada elem	Creative Curriculum	8
		Creative Curriculum Total	8
	Jornada elem Total		8
	Loma heights elem	Brigance	9
		Total	9
		Denver II	1
		Denver II Total	1
	Loma heights elem Total		10
	Mac arthur elem	Creative Curriculum	13
		Creative Curriculum Total	13
		Formal Observation	1
		Formal Observation Total	1
	Mac arthur elem Total		14
	Mesilla elem	Creative Curriculum	3
		Brigance	10
		Other	10
		Creative Curriculum Total	13

ECO Assessment Instruments by District and School

Las Cruces	Mesilla elem Total		13
	Tombaugh elem	Creative Curriculum Continuum	Other
		Creative Curriculum Continuum Total	6
		Teacher Made Assessment based on Creative Curriculum	Other
		Teacher Made Assessment based on Creative Curriculum Total	3
		teacher made assessment based on the Creative Curriculum	Other
		teacher made assessment based on the Creative Curriculum Total	2
	Tombaugh elem Total		11
	Univ hills elem	Creative Curriculum	Other
		Creative Curriculum Total	20
	Univ hills elem Total		20
	Valley view elem	Bracken Basic Concept Scale-Revised, Kaufman 2nd edition, Beery-Buktenica D	Other
		Bracken Basic Concept Scale-Revised, Kaufman 2nd edition, Beery-Buktenica Developmental T	1
		CAAP, CELFP-2; EOWPVT, ROWPVT, informal lg/speech sample, classroom ob	Other
		CAAP, CELFP-2; EOWPVT, ROWPVT, informal lg/speech sample, classroom observation, pare	1
		Creative Curriculum	Other
		Creative Curriculum Total	6
		Kaufman, Bracken, Beery-Buktenica	Other
		Kaufman, Bracken, Beery-Buktenica Total	1
		Kaufman, Bracken, Beery-Buktenica, Vineland	Other
		Kaufman, Bracken, Beery-Buktenica, Vineland Total	1
		Kaufman, Bracken-basic Concept, Beery-Buktenica	Other
		Kaufman, Bracken-basic Concept, Beery-Buktenica Total	1
		Kaufman, Vineland, Bracken, Beery-Buktenica	Other
		Kaufman, Vineland, Bracken, Beery-Buktenica Total	1
		SLP assessments (e.g. CAAP, S-CAT, PLS)	Other
		SLP assessments (e.g. CAAP, S-CAT, PLS) Total	1
		SLP assessments	Other
		SLP assessments Total	1
		Wechsler Preschool and Primary Scale of Intelligence, Vineland, Bracken, Beery-Other	Other
		Wechsler Preschool and Primary Scale of Intelligence, Vineland, Bracken, Beery-Buktenica Tot	1
	Valley view elem Total		15
	White sands elem	Total	Brigance
		and Creative Curriculum	1
		and Creative Curriculum Total	8
	White sands elem Total		8
			9

ECO Assessment Instruments by District and School

Las Cruces Total			236
Las Vegas City	Legion park elem	Brigance	7
	Total		7
	informal observations Early World of Learning Checklist	Other	1
	informal observations Early World of Learning Checklist Total		1
	Legion park elem Total		8
	Paul d henry elem	Brigance	1
	Total		1
	Paul d henry elem Total		1
Las Vegas City Total			9
Logan	Logan elem	Other	15
	Focused Portfolio Total		15
	Focused Portfolios	Other	1
	Focused Portfolios Total		1
	Logan elem Total		16
Logan Total			16
Lordsburg	Central elem	Other	1
	Goldman Frisco Test of Articulation Total		1
	Central elem Total		1
	R. v. traylor elem	Other	1
	Ages and Stages and playbased assessment	Other	1
	Ages and Stages and playbased assessment Total		1
	Child Find play based assessment	Other	2
	Child Find play based assessment Total		2
	Goldman Frisco Test of Articulation	Other	4
	Goldman Frisco Test of Articulation Total		4
	Goldman Frisco Test of Articulation/ playbased assesement	Other	3
	Goldman Frisco Test of Articulation/ playbased assesement Total		3
	Peabody Developmental Motor Scale	Other	3
	Peabody Developmental Motor Scale Total		3
	Peabody Developmental Motor Scale/ Goldman Frisco Test for Articulation	Other	1
	Peabody Developmental Motor Scale/ Goldman Frisco Test for Articulation Total		1
	Peabody Developmental Motor Scale/Child Find play based	Other	1
	Peabody Developmental Motor Scale/Child Find play based Total		1
	Peabody Developmental Motor Scale/Child Find play based, TGMD-2 PT	Other	1
	Peabody Developmental Motor Scale/Child Find play based, TGMD-2 PT Total		1
	Play based assessment and interview	Other	1
	Play based assessment and interview Total		1

ECO Assessment Instruments by District and School

Lordsburg	R. v. traylor elem	play based assessment/ Goldman Friscoe test for Articulation	Other	1
		play based assessment/ Goldman Friscoe test for Articulation Total		1
		PLS-4	Other	1
		PLS-4 Total		1
		Southwest Therapy	Other	1
		Southwest Therapy Total		1
		TGMD-2 PT	Other	1
		TGMD-2 PT Total		1
		Vineland Social/Emotional Early Childhood Scale/ BASC	Other	1
		Vineland Social/Emotional Early Childhood Scale/ BASC Total		1
		Vineland Social/Emotional Early Childhood Scale/ BASC, Goldman Friscoe Test	Other	1
		Vineland Social/Emotional Early Childhood Scale/ BASC, Goldman Friscoe Test of Articulation		1
	R. v. traylor elem Total			23
Lordsburg Total				24
Los Alamos	Aspen elementary	LAP, TMA	Other	1
		LAP, TMA Total		1
	Aspen elementary Total			1
	Barranca mesa elem	APP-R, GFTA, CELF	Other	1
		APP-R, GFTA, CELF Total		1
		CELF, APP-R	Other	3
		CELF, APP-R Total		3
		CELF, PDMS	Other	1
		CELF, PDMS Total		1
		CELF, PDMS, GFTA	Other	3
		CELF, PDMS, GFTA Total		3
		CELF,APP-R	Other	1
		CELF,APP-R Total		1
		CELF-2, GFTA-2	Other	3
		CELF-2, GFTA-2 Total		3
		GFTA	Other	6
		GFTA Total		6
		GFTA, PDMS	Other	2
		GFTA, PDMS Total		2
		LAP, TMA, PDMS	Other	1
		LAP, TMA, PDMS Total		1
		PDMS-2 CELF GFTA	Other	1
		PDMS-2 CELF GFTA Total		1

ECO Assessment Instruments by District and School

Los Alamos	Barranca mesa elem	PDMS-2	Other	3
		PDMS-2 Total		3
		PDMS-2, APP-R	Other	1
		PDMS-2, APP-R Total		1
	TMA	Other	4	
	TMA Total		4	
	Barranca mesa elem Total			30
	Mountain elem	LAP, TMA, GFTA	Other	1
		LAP, TMA, GFTA Total		1
		TMA, GFTA, PRAG	Other	1
		TMA, GFTA, PRAG Total		1
	Mountain elem Total			2
	Pinon elem	GFTA, CELF	Other	1
		GFTA, CELF Total		1
		LAP, CELF, GFTA	Other	3
		LAP, CELF, GFTA Total		3
		LAP, TMA	Other	5
		LAP, TMA Total		5
		LAP, TMA, CELF	Other	2
		LAP, TMA, CELF Total		2
		LAP, TMA, GFTA	Other	1
		LAP, TMA, GFTA Total		1
		LAP, TMA, PDMS	Other	1
		LAP, TMA, PDMS Total		1
		TMA	Other	7
		TMA Total		7
		TMA, CELF, GFTA	Other	1
		TMA, CELF, GFTA Total		1
		TMA, GFTA	Other	1
		TMA, GFTA Total		1
		TMA, PDMS	Other	1
		TMA, PDMS Total		1
		TMA, SSI, CELF	Other	1
		TMA, SSI, CELF Total		1
		TMA, GFTA	Other	1
		TMA, GFTA Total		1
		TMA, GFTA	Other	1

ECO Assessment Instruments by District and School

Los Alamos	Pinon elem	TMA, GFTA Total	1
	Pinon elem Total		26
Los Alamos Total			59
Los Lunas			
		Total	4
		Brigance	4
		MidWest NM CAP Assessment/Brigance Screening	15
		Other	15
		MidWest NM CAP Assessment/Brigance Screening Total	15
		MW NM CAP Assessment/Brigance Screening	4
		Other	4
		MW NM CAP Assessment/Brigance Screening Total	4
	Total		23
	Ann parish elem	Brigance	11
	Total		11
	Ann parish elem Total		11
	Bosque farms elem	Brigance	11
	Total		11
	Developmental Outcomes Profile	Other	6
	Developmental Outcomes Profile Total		6
	Teacher Developed Assessment	Other	1
	Teacher Developed Assessment Total		1
	Bosque farms elem Total		18
	K gallegos elem	Brigance	18
	Total		18
	K gallegos elem Total		18
	Los lunas elementary	Brigance	16
	Total		16
	Los lunas elementary Total		16
	Peralta elementary	Brigance	12
	Total		12
	Peralta elementary Total		12
	Tome elementary	Brigance	3
	Total		3
	and Teacher-created assessment	Brigance	19
	and Teacher-created assessment Total		19
	Tome elementary Total		22
	Valencia elem. sch	Brigance	19
	Total		19
	Teacher Developed Assessment	Other	1

ECO Assessment Instruments by District and School

Los Lunas	Valencia elem. sch	Teacher Developed Assessment Total	1
	Valencia elem. sch	Total	20
Los Lunas Total			140
Loving	Loving elem	The Carolina Curriculum for Preschoolers with Special Needs (CCPSN)	9
	Loving elem	The Carolina Curriculum for Preschoolers with Special Needs (CCPSN) Total	9
	Loving elem	Total	9
Loving Total			9
Lovington	Liano elementary	Brigance	186
	Liano elementary	Total	186
	Liano elementary	Total	186
Lovington Total			186
Maxwell	Maxwell elem	Therapist Designed Instrument- Progress Reports & Logs	2
	Maxwell elem	Therapist Designed Instrument- Progress Reports & Logs Total	2
	Maxwell elem	Total	2
Maxwell Total			2
Melrose	Melrose elem	First Step Screening Test for evaluating Preschoolers	1
	Melrose elem	First Step Screening Test for evaluating Preschoolers Total	1
	Melrose elem	First Step	23
	Melrose elem	First Step Total	23
	Melrose elem	Total	24
Melrose Total			24
Mora		ACE Coordination Development Test / ACE Reading Readiness Test	1
		ACE Coordination Development Test / ACE Reading Readiness Test Total	1
		Learning Accomplishment Profile Diagnostic (LAP-D)	2
		Learning Accomplishment Profile Diagnostic (LAP-D) Total	2
		Learning Accomplishment Profile Diagnostic (LAP-D)--Informal Observations	1
		Learning Accomplishment Profile Diagnostic (LAP-D)--Informal Observations Total	1
	Total		4
	Holman elem	Learning Accomplishment Profile Diagnostic (LAP-D)	6
	Holman elem	Learning Accomplishment Profile Diagnostic (LAP-D) Total	6
	Holman elem	Total	6
Mora Total			10
Moriarty	Edgewood elementary	Brigance	37
	Edgewood elementary	Total	37
	Edgewood elementary	Total	37
	Moriarty elementary	Brigance	1
	Moriarty elementary	Total	1

ECO Assessment Instruments by District and School

Moriarty	Moriarty elementary Total		1
	Mountainview elem	Brigance	1
		Total	1
	Mountainview elem Total		1
	South mountain elem	Brigance	1
		Total	1
	South mountain elem Total		1
Moriarty Total			40
Mountainair	Mountainair elem	Creative Curriculum Developmental Continuum Summary Creative Curriculum Developmental Continuum Summary Total Creative Curriculum Developmental Continuum Creative Curriculum Developmental Continuum Total	Other Other Other Other
	Mountainair elem Total		2
Mountainair Total			2
Pecos	Pecos elem	Creative Curriculum Developmental Continuum Assessment Creative Curriculum Developmental Continuum Assessment Total Creative Curriculum Developmental Continuum Assessment Creative Curriculum Developmental Continuum Assessment Total Houghton Mifflin Observation Checklist Houghton Mifflin Observation Checklist Total Houghton Mifflin Preschool Program Observation Checklist Houghton Mifflin Preschool Program Observation Checklist Total Speech Language Progress Report Speech Language Progress Report Total	Other Other Other Other Other Other Other Other Other Other
	Pecos elem Total		27
Pecos Total			27
Penasco	Penasco elem	LAP-3 LAP-3 Total Success for All SFA Success for All SFA Total Success for All Success for All Total	Other Other Other Other Other Other
	Penasco elem Total		11
Penasco Total			11
Pojoaque		Arizona Articulation Proficiency Scale Arizona Articulation Proficiency Scale Total Preschool Language Scale-3 Spanish Version/ Austin Articulation Spanish Meas	Other Other Other
			4
			4
			1

ECO Assessment Instruments by District and School

Pojoaque	Penasco elem Total	Preschool Language Scale-3 Spanish Version/ Austin Articulation Spanish Measure Total	1
		Preschool Language Scale-4	Other
	Total	Preschool Language Scale-4 Total	1
Pojoaque high			6
		Brigance	10
	Total		10
Pojoaque high Total			10
	Pojoaque primary el	Brigance	2
	Total		2
Pojoaque primary el Total			2
Pojoaque Total			18
Portales	Brown elem	Brigance	63
		Total	63
	Brown elem Total		63
Portales Total			63
Questa	Alta vista elem	On the Road to Learning/ Observation using State Preschool outcomes	Other
		On the Road to Learning/ Observation using State Preschool outcomes Total	2
	Alta vista elem Total		2
Questa Total			2
Raton		LAD-D	Other
		LAD-D Total	1
		LAP-D	Other
		LAP-D Total	5
	Total		5
	Columbian elem	LAP-D	Other
		LAP-D Total	1
		The Creative Curriculum	Other
		The Creative Curriculum Total	1
	Columbian elem Total		2
Longfellow elem	LAP-D	Other	4
	LAP-D Total		4
	The Creative Classroom	Other	1
	The Creative Classroom Total		1
	The Creative Curriculum	Other	2
	The Creative Curriculum Total		2
The Creative Curriculum	Other	22	
The Creative Curriculum Total		22	

ECO Assessment Instruments by District and School

Raton	Longfellow elem	The Creative Curriculum	Other	1
		The Creative Curriculum Total		1
		The Creative Curriculum	Other	1
		The Creative Curriculum Total		1
	Longfellow elem Total			31
Raton Total				39
Reserve	Reserve elem		Brigance	4
		Total		4
	Reserve elem Total			4
Reserve Total				4
Rio Rancho		Levels Achievement Profiles	Other	1
		Levels Achievement Profiles Total		1
		t Total	Other	7
		t Total		7
		Teacher	Other	149
		Teacher Total		149
	Total			157
	Colinas del norte el	Levels Achievement Profile	Other	1
		Levels Achievement Profile Total		1
		Teacher	Other	2
		Teacher Total		2
	Colinas del norte el Total			3
Rio Rancho Total				160
Roswell		Brigance Screen	Other	40
		Brigance Screen Total		40
	Total			40
	Parkview elem	103121323	Other	1
		103121323 Total		1
		Brigance Scree	Other	1
		Brigance Scree Total		1
		Brigance Screen	Other	169
		Brigance Screen Total		169
		Brigance	Other	3
		Brigance Total		3
	Parkview elem Total			174
Roswell Total				214
Ruidoso	Nob hill elem		Brigance	25

ECO Assessment Instruments by District and School

Ruidoso	Nob hill elem	Total	25
	Nob hill elem Total		25
Ruidoso Total			25
San Jon	San jon elem	Focused Portfolio	2
	San jon elem Total	Focused Portfolio Total	2
		Other	2
San Jon Total			2
Santa Fe			
		Brigance	9
	Total		9
	Acad tech. & classic		9
	Total	Brigance	1
	Acad tech. & classic Total		1
	Alvord elem	Brigance	13
	Total		13
	Alvord elem Total		13
	Becc	Brigance	78
	Total		78
	Becc Total		78
	Nmsd	An Individual Portfolio	4
	Total	Other	4
	Nmsd Total	An Individual Portfolio Total	4
	Tesuque elem		4
	Total	Brigance	1
	Tesuque elem Total		1
			1
Santa Fe Total			106
Santa Rosa			
	homeschooled	Other	2
	homeschooled Total		2
	LAP-D	Other	8
	LAP-D Total		8
	N/A	Other	1
	N/A Total		1
	Total		11
Santa Rosa Total			11
Silver	Cliff elem	Brigance	1
	Total		1
	Cliff elem Total		1

ECO Assessment Instruments by District and School

Silver	Harrison schmitt el		Brigance	14
	Total			14
	Harrison schmitt el Total			14
	Stout elementary		Brigance	10
	Total			10
	Stout elementary Total			10
Silver Total				25
Socorro	Cottonwood valley ch		Brigance	5
	Total			5
	Cottonwood valley ch Total			5
	Edward e. torres el		Brigance	30
	Total			30
	Edward e. torres el Total			30
Socorro Total				35
Springer		104-367-016	Other	1
		104-367-016 Total		1
		SELF (pre-school), Denver II	Other	5
		SELF (pre-school), Denver II Total		5
	Total			6
Springer Total				6
Taos	Anansi charter		Brigance	1
	Total			1
	Anansi charter Total			1
	Ranchos de taos elem		Brigance	13
	Total			13
	Callier-Azusa		Other	2
	Callier-Azusa Total			2
	Ranchos de taos elem Total			15
	Taos elem		Brigance	30
	Total			30
	Clinical Assessment of Articulation and Phonology		Other	2
	Clinical Assessment of Articulation and Phonology Total			2
	Teacher made assessments and observations		Other	5
	Teacher made assessments and observations Total			5
	Taos elem Total			37
Taos Total				53
Tatum	Tatum elem		Brigance	3

ECO Assessment Instruments by District and School

Tatum	Tatum elem	Total	3
	Tatum elem Total		3
Tatum Total			3
Texico	Texico elem	Brigance	15
	Total		15
	First Step-Teacher Observation-Vineland Adaptive Behavior Scale	Other	1
	First Step-Teacher Observation-Vineland Adaptive Behavior Scale Total		1
Texico elem Total			16
Texico Total			16
Truth or Consequences	Arrey elem	Brigance	19
	Total		19
	Arrey elem Total		19
	T or c elem	Brigance	34
	Total		34
T or c elem Total			34
Truth or Consequences Total			53
Tucumcari	Dial 3	Other	26
	Dial 3 Total		26
	DIAL-3	Other	14
	DIAL-3 Total		14
Total			40
	Closed	Other	7
	Dial 3 Total		7
Closed Total			7
Tucumcari Total			47
Tularosa	Tularosa elem	informal preschool assessment	1
		Brigance	9
		Other	10
		informal preschool assessment Total	10
Tularosa elem Total			10
Tularosa Total			10
Vaughn	Vaughn elem	Multi-disciplinary Evaluation	2
		Multi-disciplinary Evaluation Total	2
Vaughn elem Total			2
Vaughn Total			2
West Las Vegas		Brigance	16
	Total		16
Total			16

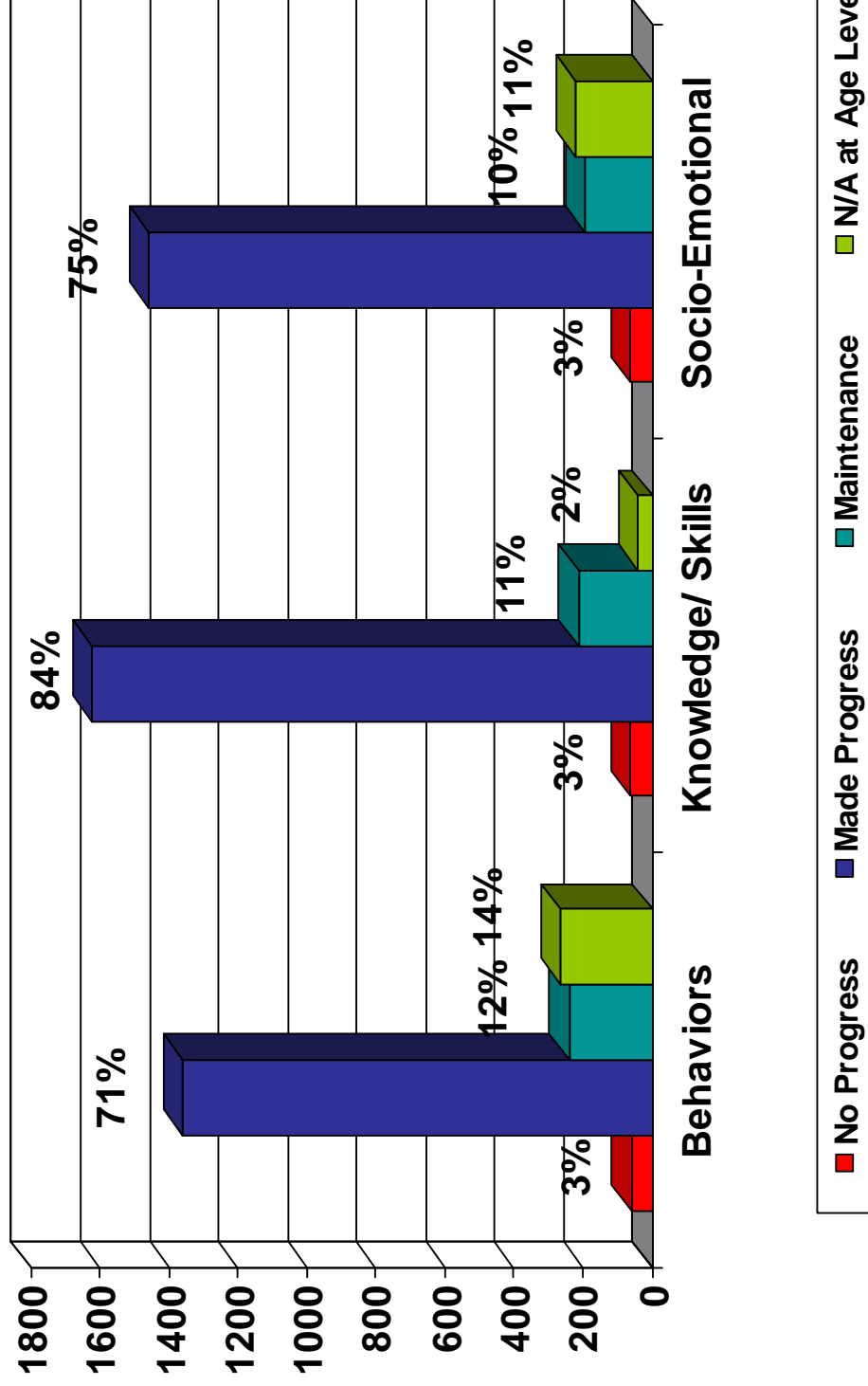
ECO Assessment Instruments by District and School

West Las Vegas Total		16
Zuni	DIAL-3	1
	Other	1
DIAL-3 Total		1
Total		1
A:shiwí elementary	DIAL-3	18
	Other	18
DIAL-3 Total		18
A:shiwí elementary Total		18
Zuni Total		19
Grand Total		4122

Early Childhood Outcomes for 3Y, Program Year, 2005-2006

Appropriate Behaviors		
Did Not Make Progress (below baseline)	59	3%
Made Progress (above baseline)	1371	71%
Maintenance (same as baseline)	240	12%
N/A (reported skills at age level when entering program)	264	14%
3Y Total Responses/ Response Rate	1934	94%
Total Providers	2057	
Acq & Use of Knowledge and Skills		
Did Not Make Progress (below baseline)	62	3%
Made Progress (above baseline)	1621	84%
Maintenance (same as baseline)	212	11%
N/A (reported skills at age level when entering program)	39	2%
3Y Total Responses/ Response Rate	1934	94%
Total Providers	2057	
Pos Socio-Emotional Skills		
Did Not Make Progress (below baseline)	62	3%
Made Progress (above baseline)	1457	75%
Maintenance (same as baseline)	193	10%
N/A (reported skills at age level when entering program)	222	11%
3Y Total Responses/ Response Rate	1934	94%
Total Providers	2057	

Outcomes for 3Y, 2005-2006 (N=1934)



Early Childhood Outcomes for 3Y & 4Y, Program Year, 2005- 2006

Appropriate Behaviors		
3Y Did Not Make Progress (below baseline)	45	
4Y Did Not Make Progress (below baseline)	59	
Total	104	3%
3Y Made Progress (above baseline)	1588	
4Y Made Progress (above baseline)	1371	
Total	2959	72%
3Y Maintenance (same as baseline)	222	
4Y Maintenance (same as baseline)	240	
Total	462	11%
3Y N/A (reported skills at age level when entering program)	333	
4Y N/A (reported skills at age level when entering program)	264	
Total	597	14%
3Y+4Y Total Responses/ Response Rate	4122	89%
Total Providers	4639	
Acq & Use of Knowledge and Skills		
3Y Did Not Make Progress (below baseline)	53	
4Y Did Not Make Progress (below baseline)	62	
Total	115	3%
3Y Made Progress (above baseline)	1883	
4Y Made Progress (above baseline)	1621	
Total	3504	85%
3Y Maintenance (same as baseline)	200	
4Y Maintenance (same as baseline)	212	
Total	412	10%
3Y N/A (reported skills at age level when entering program)	52	
4Y N/A (reported skills at age level when entering program)	39	
Total	91	2%
3Y+4Y Total Responses/ Response Rate	4122	89%
Total Providers	4639	
Pos Socio-Emotional Skills		
Did Not Make Progress (below baseline)	45	
Did Not Make Progress (below baseline)	62	
Total	107	3%
Made Progress (above baseline)	1691	
Made Progress (above baseline)	1457	
Total	3148	76%
Maintenance (same as baseline)	197	
Maintenance (same as baseline)	193	
Total	390	9%
N/A (reported skills at age level when entering program)	255	
N/A (reported skills at age level when entering program)	222	
Total	477	12%
3Y+4Y Total Responses/ Response Rate	4122	89%
Total Providers	4639	

Outcomes for 3Y & 4Y, 2005-2006 (N=4122)

